

Webinars

# enhance

Resources for **DAIRYWOMEN**  
without leaving the farm



[DairyGirlNetwork.com](http://DairyGirlNetwork.com)



# Farm Safety Programs

Kelly E Reed, DVM  
kreed@diamond.com



# Why take time to talk Safety?

- ◆ Agriculture is the most dangerous career



# Farm fatalities on the rise: Ag industry ranked most hazardous in the US

By James B. Miller, Jr. / Forum News Service on Jan 4, 2019 at 3:51 p.m.



DICKINSON, N.D. — There's a surprising trend taking root in North Dakota and Minnesota — agriculture fatalities.

Last month, a western North Dakota farmer was killed when his clothing became entangled with a farm implement on Dec. 15. Less than a month prior on Nov. 16, a young mother was killed in a farm accident after being pinned by a hay bale in western Minnesota. 60 days before that, in September, a juvenile died after being trapped in a grain auger-conveyor in central South Dakota.

According to the most recent United States Department of Labor report, agriculture ranked as the most hazardous industry in the United States in 2017-18.

Source: Ag Week



National Children's Center  
for Rural and Agricultural Health and Safety

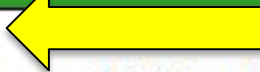
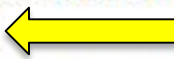
# 2018 Fact Sheet

## Childhood Agricultural Injuries in the U.S.

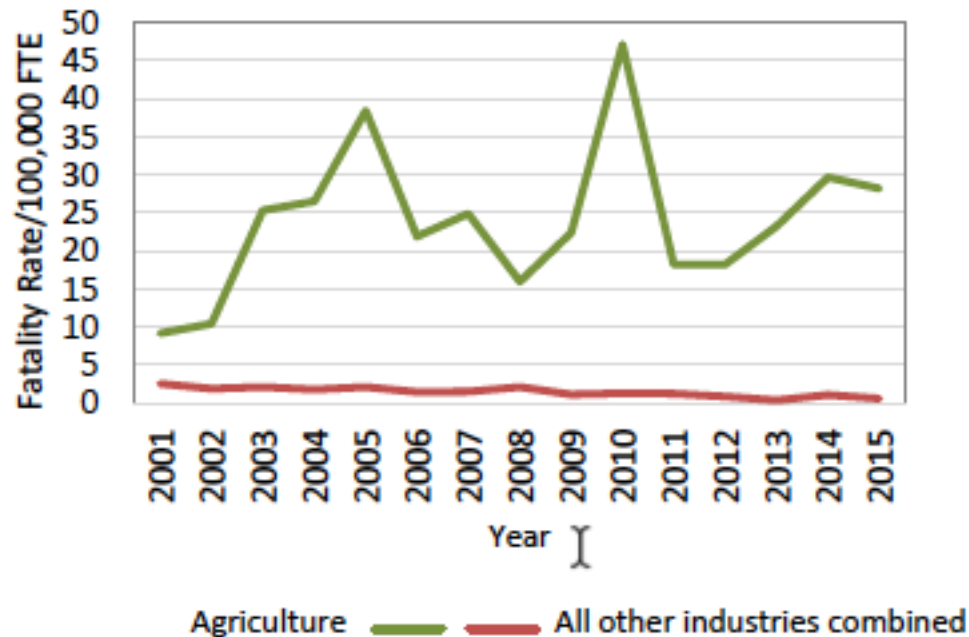
### Population at Risk

Farms	<ul style="list-style-type: none"> <li>In 2017, there were approximately 2.05 million farms in the United States.<sup>1</sup></li> </ul>
Children	<ul style="list-style-type: none"> <li>About 893,000 youth lived on farms in 2014 and more than half (51%) worked on their farm.<sup>2</sup></li> <li>More than 265,600 non-resident youth were hired in agriculture in 2014.<sup>2</sup></li> <li>Approximately 23,883,000 youth visited farms in 2014.<sup>2</sup></li> </ul>

### Fatal Childhood Agricultural Injuries

All youth	<ul style="list-style-type: none"> <li>About every three days, a child dies in an agriculture-related incident.* </li> <li>Of the leading sources of fatalities among all youth, 25% involved machinery, 17% involved motor vehicles (includes ATVs), and 16% were drownings.<sup>3</sup></li> </ul>
Working youth	<ul style="list-style-type: none"> <li>From 2001 to 2015, 48 percent of all fatal injuries to young workers occurred in agriculture.<sup>4</sup></li> <li>Since 2009, the number of youth worker fatalities in agriculture has been higher than in all other industries combined. </li> <li>In 2015, young workers were 44.8 times more likely to be fatally injured in agriculture when compared to all other industries combined (28.21 per 100,000 FTE vs 0.63 per 100,000 FTE).<sup>4</sup></li> <li>Transportation incidents were the most common fatal event, with tractors and ATVs as the primary vehicle sources.<sup>4</sup></li> </ul>

## Fatality Rates Agriculture vs All Other Industries, 2001-2015



Source: Fatal injury totals were generated by NIOSH researchers with restricted access to the Bureau of Labor Statistics (BLS) Census of Fatal Occupational Injuries (CFOI)

In 2016, 417 farmers and farm workers died from a work-related injury, resulting in a fatality rate of 21.4 deaths per 100,000 workers. Transportation incidents, which include tractor overturns were the leading cause of death for these farmers and farm workers.

Every day, about 100 agricultural workers suffer a lost-work-time injury.

# How to bring safety to the forefront?

- ◆ Lead by example
- ◆ Set rules & follow them
  - ◆ Ie. No riders, seatbelts
- ◆ Identify goals
  - ◆ Decrease injuries, zero fatalities
  - ◆ Every person goes home to their family every night
- ◆ Openly discuss near miss accidents/accidents
- ◆ Display timeframe without accidents
- ◆ Have consistent safety 'meetings'
  - ◆ Look for teachable moments every day
  - ◆ Safety Stretches
- ◆ Document safety training, but avoid it becoming just an HR exercise

# Protocol for handling injuries/accidents

- ◆ When to call 911/emergency services vs treating on farm?
- ◆ Who has first aid/CPR training? When was the last time they went to training?
- ◆ Emergency Drills/Role Play
- ◆ First aid kits (recently) stocked and available?
- ◆ MSDS sheets available 24/7 for chemical exposure
- ◆ Documentation of injuries/accidents
- ◆ Drug testing?





# Monthly Safety Audit/Inspection

- ◆ Are third party safety audits available to you?
- ◆ Identify an individual(s) to perform the audit
- ◆ Provide a checklist
- ◆ If you have regularly scheduled monthly safety meetings, performing audits prior to meetings allows for discussion of findings at the meetings.

	Manure Storage Safety Checklist	Yes	No	N/A	Comments	Date Improved
1	Have all employees been trained annually on manure confined space hazards?					
2	Are manure lagoons, or manure pits fenced off?					
3	Do manure lagoons, manure pits, or storage structures have warning signs posted?					
4	Do manure pits or lagoons have barriers to prevent equipment from falling or rolling into them? (agitator pumps on wheels that are backed into lagoons are exempt-use wheel chocks on pump out tractor)					
5	Do manure lagoons, manure pits, or storage structures have rescue equipment, readily accessible?					
6	Is manure handling equipment properly shielded?					
7	Are manure pits covered with sturdy well-fitted grates in good condition?					
8	Are proper confined space procedures followed for confined space entry in to manure pits and structures?					

Note: Shaded items correspond to OSHA regulations

# Areas of the farm for Review & Training

- ◆ Equipment
  - ◆ ROPS, UTV's, skidsteers, forklifts
- ◆ Feed storage areas
- ◆ Manure storage
- ◆ Confined Spaces
- ◆ Chemicals
- ◆ Cattle handling
- ◆ Exposure to weather
- ◆ Slips & Falls prevention
- ◆ Fire Safety
- ◆ Electric shock
- ◆ Respirator Use
- ◆ Emergency Protocols
- ◆ Disaster Plans

# Equipment



# UTV's, skidsteers, forklifts



# PTO shields

A Power take-off shield can wrap  
your arm or leg around the PTO shaft

**9 times** in 1 second at **540 PTO rpm** **or** **16 times** in 1 second at **1000 PTO rpm**

**21%**

of PTO entanglements occur  
**among children**

PTO shields are  
**missing on**  
**1/3-1/2**  
of all PTO drivelines

PTO entanglements  
are one of the top

**3**

causes of  
**FATAL INJURIES**  
in the United States

Amputations occur  
**28-43%**  
of the time in  
PTO entanglements



# Equipment - Maintenance



# Traffic



# Slow Moving Vehicle Signs, Reflectors

Are signs and reflectors clean & easily visible?





# Silage faces – dangerous overhangs





Face angled back  
so less likely to fall

Plastic and tires  
removed away  
from dangerous  
face edge

# Hay Stacks

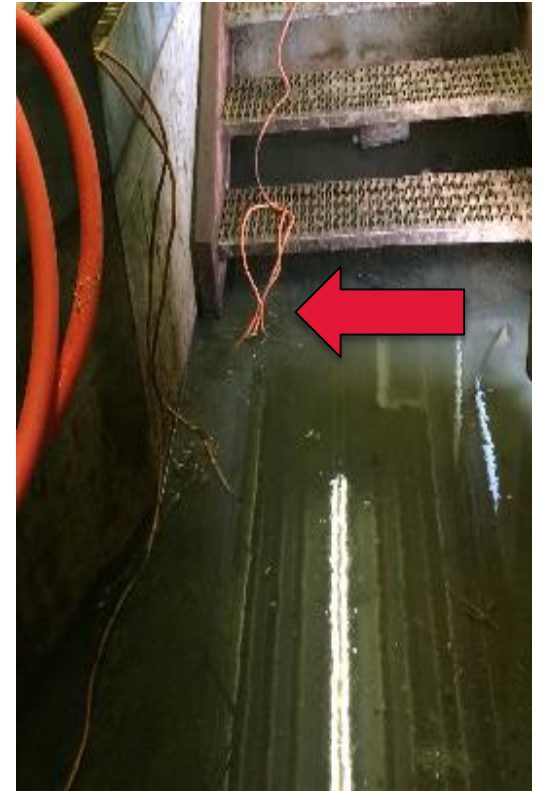


Fall Hazard, Fire Hazard

Single stack bales to cut strings



# Electrical shock risk



# Lock out, tag out



# Feed Mixer Boxes



# Good time for using buddy system & Lock out/tag out



# Manure Storage

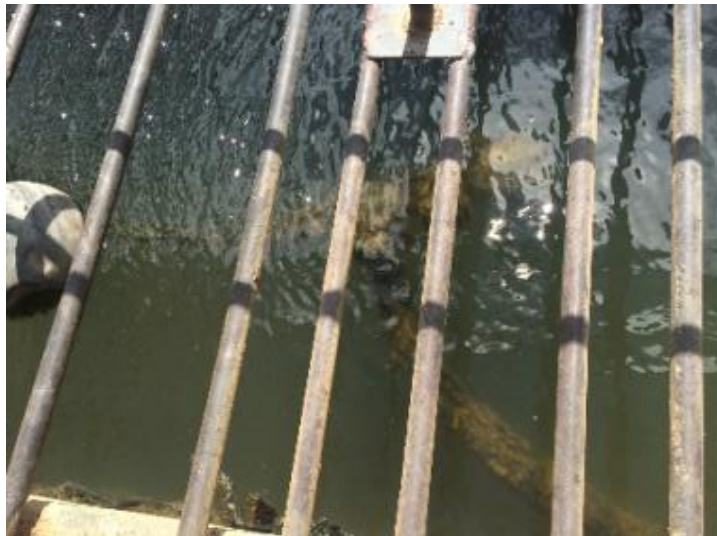




# Manure Storage



# Confined Spaces



# Chemicals



- Proper Labeling
- Storage
- MSDS Sheets



# Cattle Handling



# Cattle Handling



# Exposure to weather

HEAT EXHAUSTION		OR	HEAT STROKE	
Faint or dizzy			Throbbing headache	
Excessive sweating			No sweating	
Cool, pale, clammy skin			Body temperature above 103° Red, hot, dry skin	
Nausea or vomiting			Nausea or vomiting	
Rapid, weak pulse			Rapid, strong pulse	
Muscle cramps			May lose consciousness	
<ul style="list-style-type: none"> <li>• Get to a cooler, air conditioned place</li> <li>• Drink water if fully conscious</li> <li>• Take a cool shower or use cold compresses</li> </ul>	<b>CALL 9-1-1</b>			<ul style="list-style-type: none"> <li>• Take immediate action to cool the person until help arrives</li> </ul>
<a href="https://www.weather.gov/socialmedia">Weather.gov/socialmedia</a> <a href="https://www.weather.gov/heat">Weather.gov/heat</a>			<a href="https://twitter.com/SacramentoOES">@SacramentoOES</a> <a href="https://www.SacramentoReady.org">SacramentoReady.org</a>	



# Slips & Falls



# Fire Safety





# When do you need to call fire department?



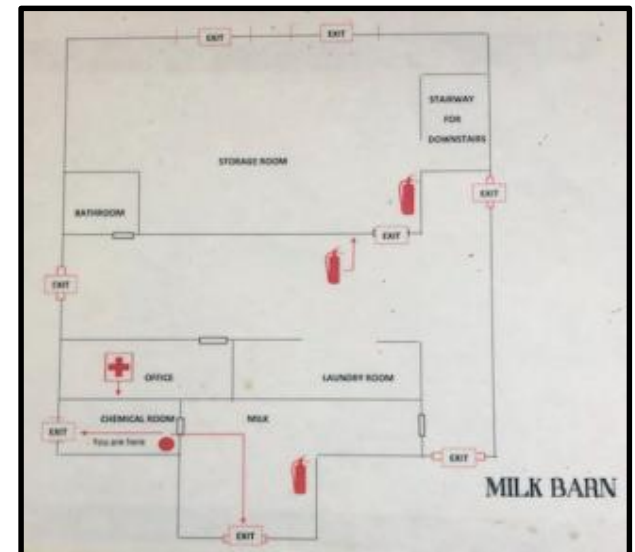
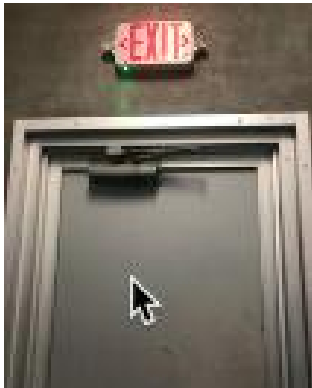
# Emergency Protocols

- ◆ Who to call in case of emergency?
  - ◆ Does it change depending on the emergency?
- ◆ 911- have physical address posted



# Disaster Plan

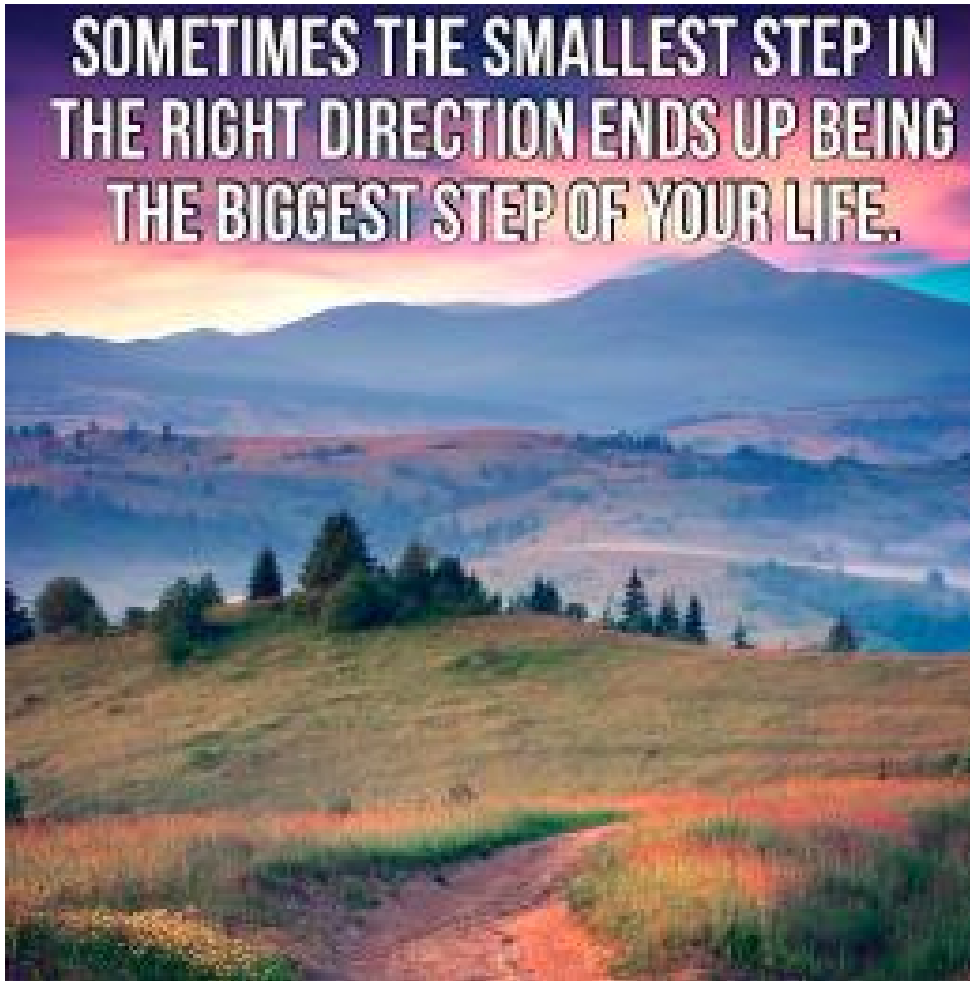
- ◆ What to do if a natural disaster strikes?
  - ◆ Flood, Fire, Tornado, Hurricane, Blizzard etc
- ◆ Evacuation Plan
- ◆ How to care for animals? Employees?
- ◆ What are the essential tasks and who will do them?
- ◆ Mass animal casualty disposal



# Resources

- ◆ [www.OSHA.gov](http://www.OSHA.gov)
  - ◆ Dirty Dozen Checklist, Quick takes newsletter
- ◆ Farm Bureau
  - ◆ <https://www.fb.org/programs/safety-health/>
- ◆ WA State Labor and Industries
  - ◆ <https://www.lni.wa.gov/Safety/Topics/AtoZ/APP/resources.asp>
- ◆ Other farm organizations
  - ◆ [www.wafla.org](http://www.wafla.org)
  - ◆ NY: [www.nycamh.org/](http://www.nycamh.org/)
  - ◆ MN: <http://Umash.umn.edu/>
  - ◆ WI: <https://fyi.uxex.edu/agsafety/>

**SOMETIMES THE SMALLEST STEP IN  
THE RIGHT DIRECTION ENDS UP BEING  
THE BIGGEST STEP OF YOUR LIFE.**





**Kelly E Reed, DVM**  
**[kreed@diamondv.com](mailto:kreed@diamondv.com)**



# enhance



## Questions

Thank you for attending Dairy Girl Network's Enhance Webinar



Dairy Girl Network Vision Sponsors

**Dairy Herd**



**Mycogen**  
SEEDS

Dairy Girl Network Sustaining Sponsors

**DeLaval**

LAND O'LAKES, INC.



Webex hosting brought to you by **zoetis**

© Dairy

[DairyGirlNetwork.com](http://DairyGirlNetwork.com)



[facebook.com/DairyGirlNetwork](https://facebook.com/DairyGirlNetwork)



We are now on Instagram! @dairygirlnetwork

#dairygirl

**ond V**